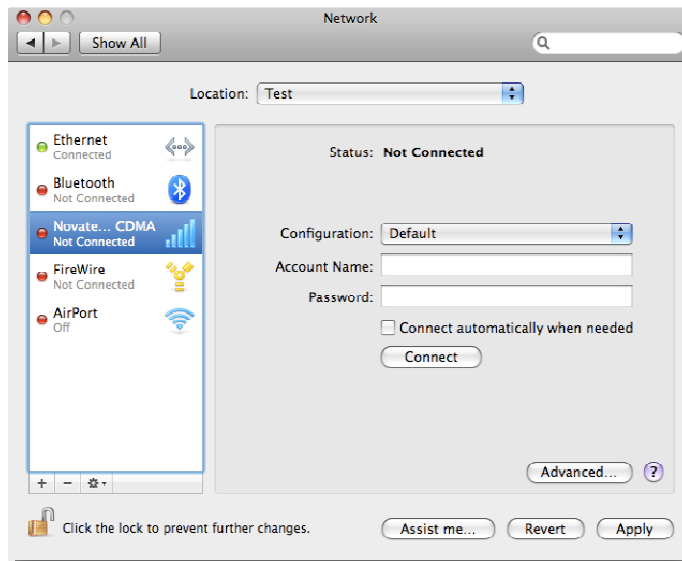


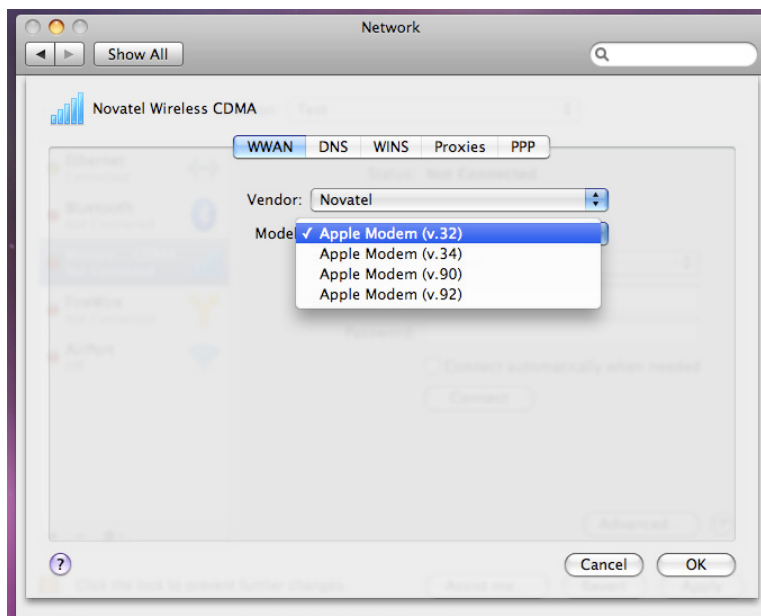
## Vendor CCLs Not Listed ¶

In System Preferences > Network

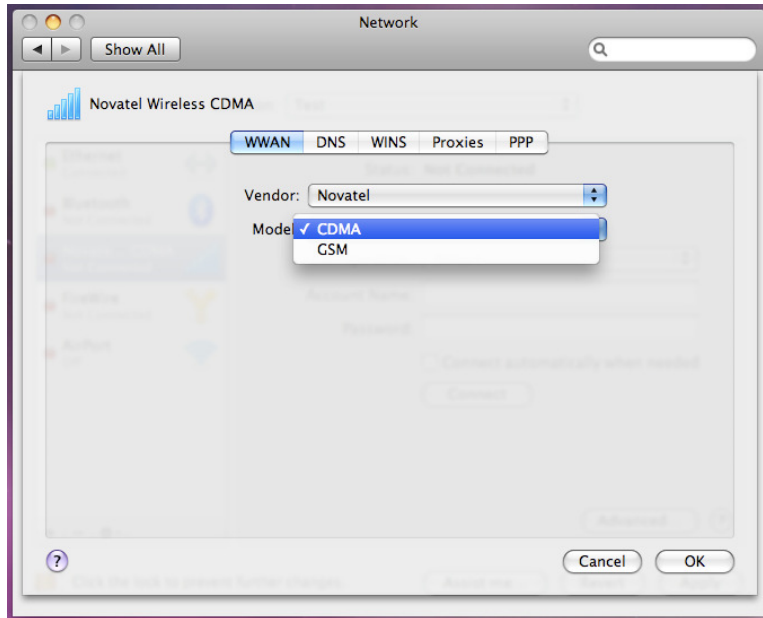
If the user plugs in a recognized modem (U730, U740, XU870, XV620, XV720, U720, X950, MC950), they need to **configure the device by pressing the "Advanced..." button.**



Under the Advanced sheet the user can pick the device Vendor, and the device Model. If they correctly **pick the Novatel device, they cannot pick a valid Model (only Apple "Models" are shown even though the vendor is changed).**



The user must **click OK** to close the Advanced sheet, and then **click "Advanced..." again** in order to correctly **pick the Model** (GSM for HSPA products, CDMA for EVDO products).



The user must then **click "OK"** to close the Advanced sheet, followed by **"Apply"** in the main window before clicking the **Connect** button.

### Signal Bars and Phone Icon

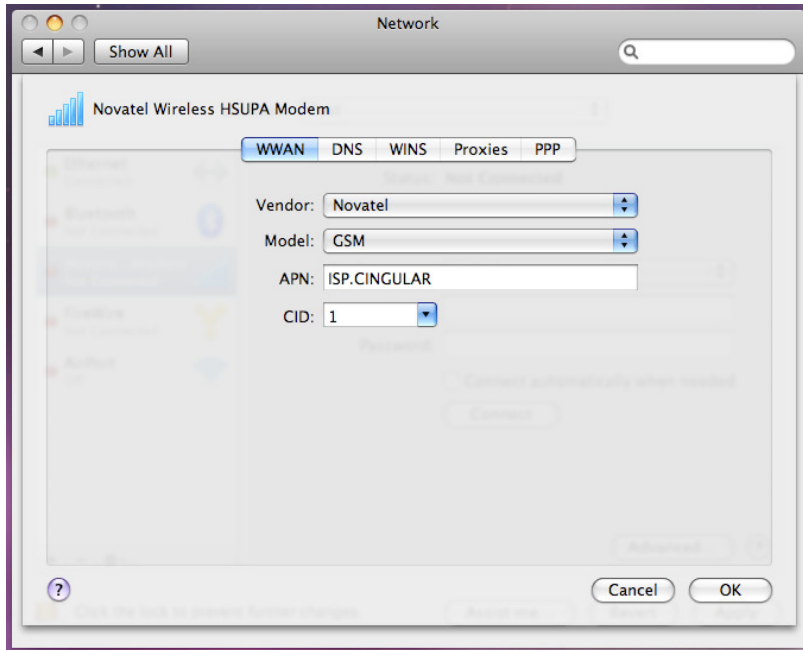
Also, for modems supported by our v2.0 driver that are not supported directly by Apple's driver, neither will the "Signal bars" connection manager show up in the menu bar, nor is a "Phone" icon available for the menu bar.

We're filing these bugs with Apple and expect (some) of them to be addressed in the next update (10.5.1).

## Configuring the Device ¶

### Configuring the APN ¶

After successfully **picking** the **Vendor: Novatel** and **Model: GSM** to pick the correct CCL. The user will then need to **enter the proper APN for their carrier** (the default is ISP.CINGULAR).



Users also have the option of picking a different CID if necessary.

The user must click **"OK"** followed by **"Apply"** before being able to click **"Connect"** and have the changes take effect.